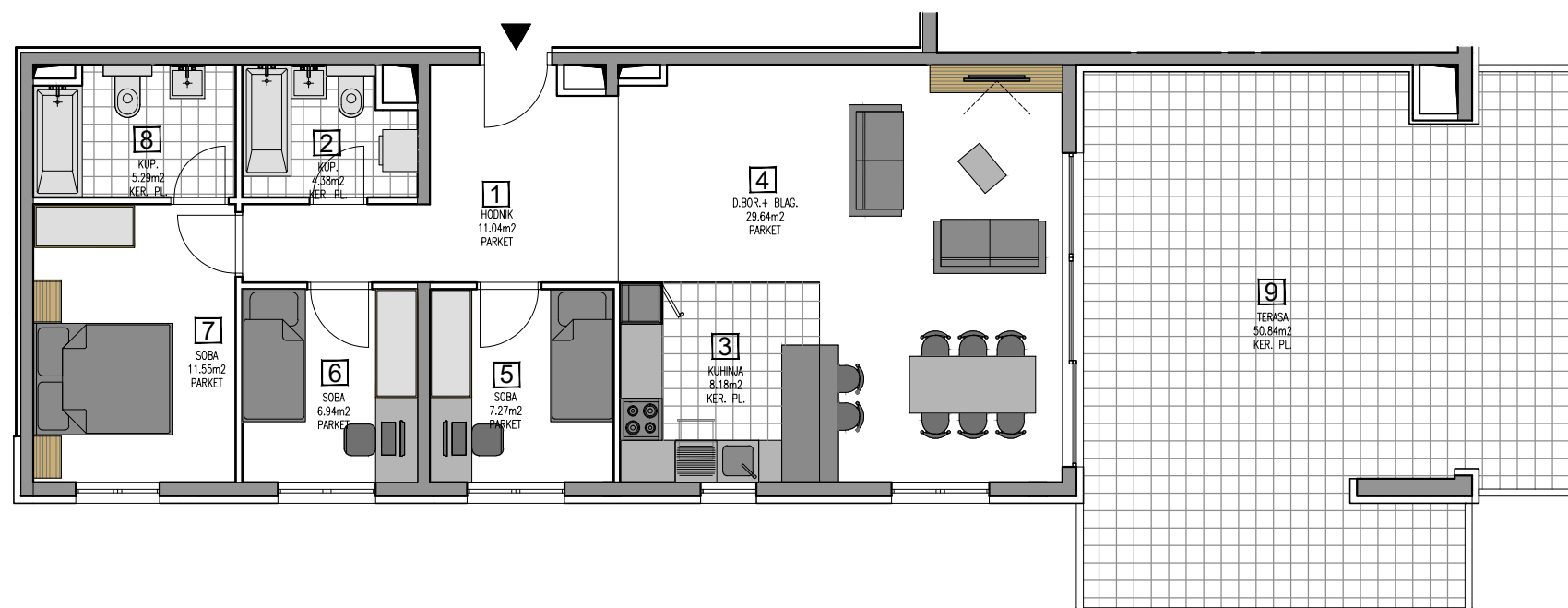




Sigma matica
Selska 90A
10000 Zagreb

informacije i prodaja: tel. +385 1 6386 428
tel. +385 1 6386 431
tel. +385 1 5390 370
tel. +385 1 5390 373
fax. +385 1 6386 432
e-mail. info@sigmamatica.hr
www.sigma-matica.hr

netto površine 3,5-sobni stan



- 1 hodnik 11,04m²
- 2 kupaonica 4,38m²
- 3 kuhinja 8,18m²
- 4 db.+blag. 29,64m²
- 5 soba 7,27m²
- 6 soba 6,94m²
- 7 soba 11,55m²
- 8 wc 5,29m²

ukupno: 84,29m²

- 9 terasa 50,84m²
(x0,25) 12,71m²

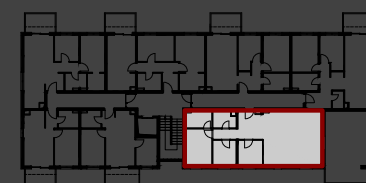
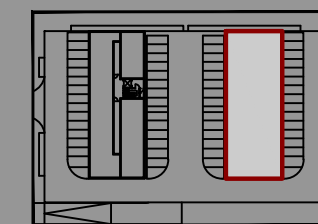
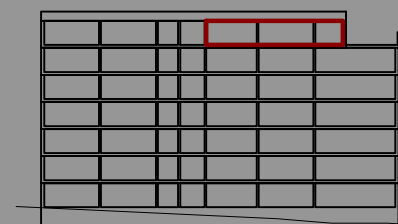
ukupno NP stana:
135,13m²

sveukupno NKP stana:
97,00m²

stan:

Z9 - 6.7

97,00 m²



Z8_6.kat



INTERIOR DESIGN _ Zadar_Z9_Z9

